



P.O. BOX 180
VULCAN, ALBERTA
T0L 2B0

TELEPHONE: 1-403-485-2241
TOLL FREE: 1-877-485-2299
FAX: 1-403-485-2920
www.vulcancounty.ab.ca

December 15, 2025

Our File: DP 80-2025

Notification of Proposed Development

Vulcan County has received a development permit application:

Location: Division 3; SE 26-16-24 W4
Development: Second Dwelling; Ready-to-Move Dwelling
Land Use District: (RG) – Rural General
Applicant: Travis Schmeelke

This application is due for consideration by Vulcan County Administration on **January 5, 2026**.

If you have any concerns or comments regarding this development or if you require more information, please contact the Vulcan County office, quoting the above file number by **4:00 pm on January 2, 2026**, to the Development Department via regular mail, fax, email devassist@vulcancounty.ab.ca, or call 403-485-3135.

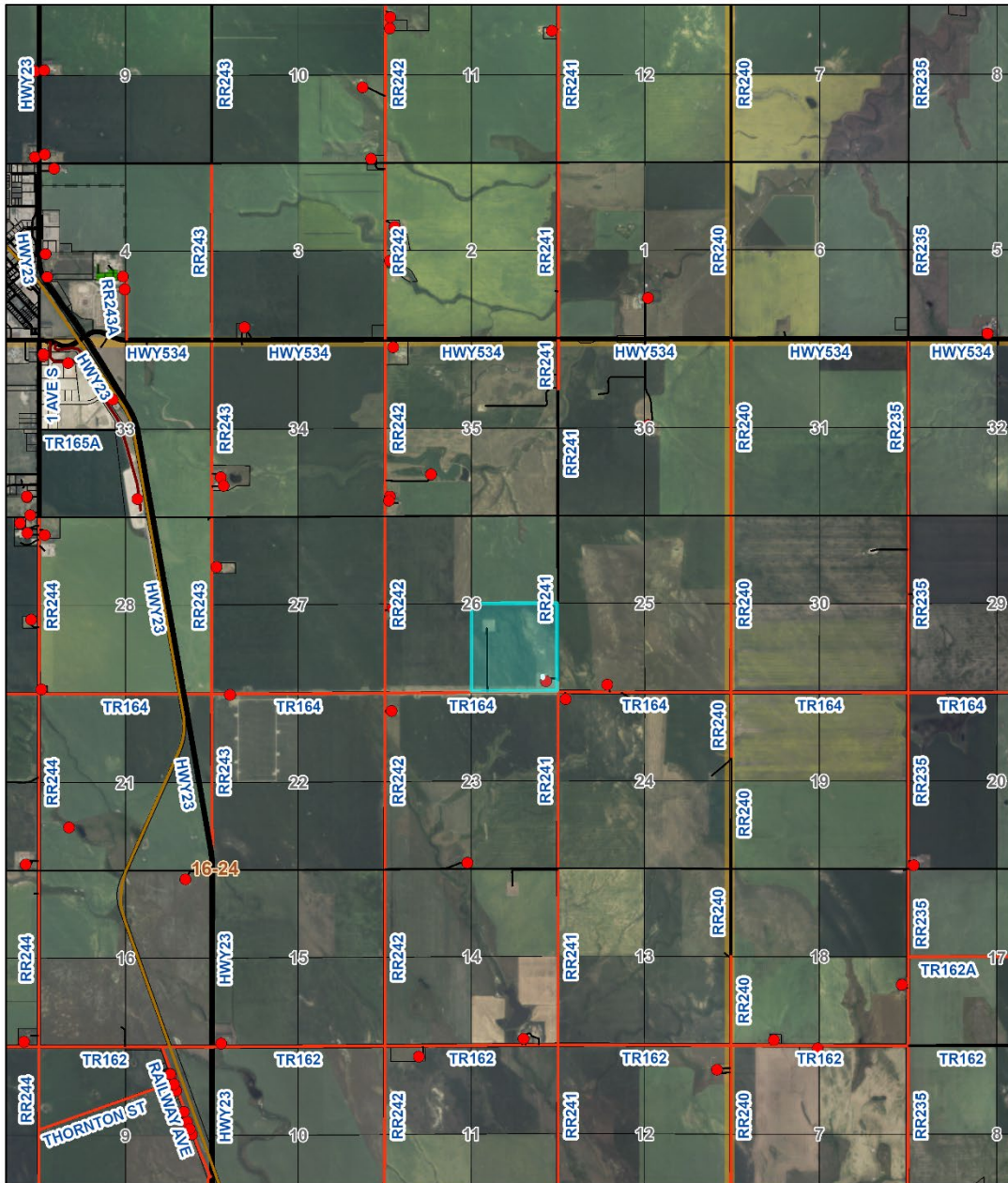
Kindest Regards,

A handwritten signature in blue ink that reads 'Alena Matlock'.

Alena Matlock
Development Officer
Vulcan County

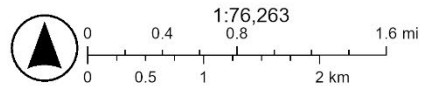


Ortho



12/8/2025, 1:44:55 PM

- Residences
- Points of Interest
- Waste Transfer Station
- Community Hall
- School
- Road Network
- County Gravel Road
- County Paved Road
- Private Road
- Hamlet Street
- Provincial Secondary Highway
- Provincial Primary Highway
- Railway
- County Boundary
- Landowners (December 1, 2025)
- Town & Villages Corporate Boundaries
- VC Aerial - July 2024
- Red: Band_1
- Green: Band_2
- Blue: Band_3
- <all other values>



Sources: Esri, TomTom, Garmin, FAO, NOAA, USGS, © OpenStreetMap contributors, and the GIS User Community