



P.O. BOX 180
VULCAN, ALBERTA
T0L 2B0

TELEPHONE: 1-403-485-2241
TOLL FREE: 1-877-485-2299
FAX: 1-403-485-2920
www.vulcancounty.ab.ca

August 20, 2025

Our File: DP 59-2025

Notification of Proposed Development

Vulcan County has received a development permit application:

Legal Land Location: Plan 2211242, Block 1, Lot 10 within SE 20-17-21 W4
Type of Development: Accessory Building > 1600 Sq Ft
Land Use District: (GCR) – Grouped Country Residential
Applicant: **Dawn Coupland**

The Municipal Planning Commission will be meeting to consider this application on **September 3, 2025** at 9:00 a.m. in the Vulcan County Administration Building, 102 Centre Street Vulcan, Alberta.

If you have any concerns or comments regarding this development or if you require more information, please contact the Vulcan County office, quoting the above file number by **4:00 pm on September 2, 2025**, to the Development Department via regular mail, fax, email devassist@vulcancounty.ab.ca, or call 403-485-3135.

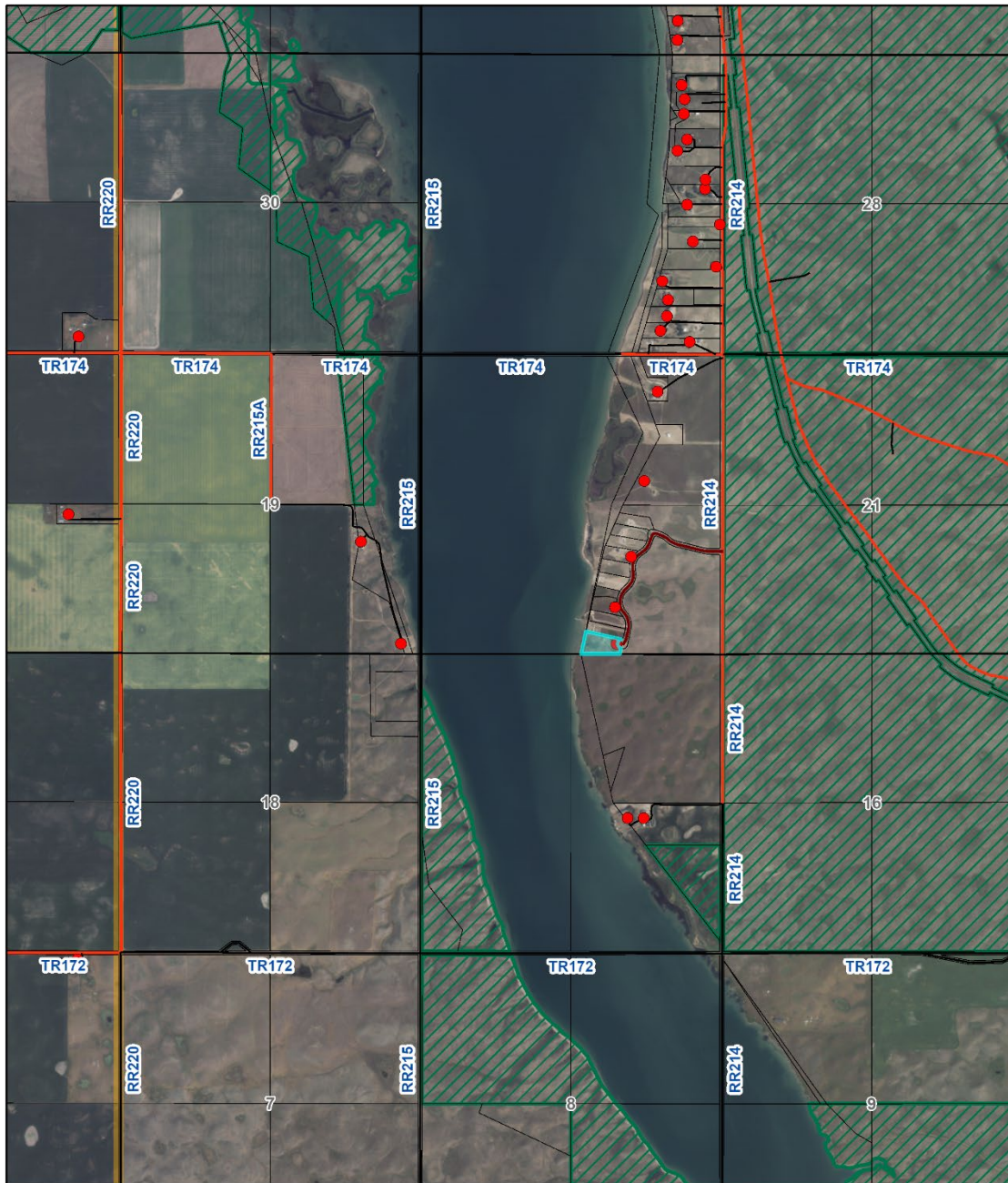
Kindest Regards,

A handwritten signature in blue ink, reading "Alena Matlock".

Alena Matlock
Development Officer
Vulcan County

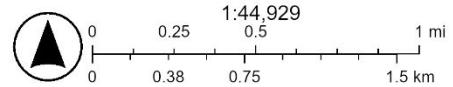


Ortho



8/20/2025, 8:37:40 AM

- Residences
- Landowners (August 1, 2025)
- Road Network
- County Gravel Road VC Aerial - July 2024
- County Gravel Road
- Private Road
- <all other values>
- County Boundary
- Provincial Grazing Leases (March 2025)
- Red: Band_1
- Green: Band_2
- Blue: Band_3



Sources: Esri, TomTom, Garmin, FAO, NOAA, USGS, © OpenStreetMap contributors, and the GIS User Community

