



P.O. BOX 180  
VULCAN, ALBERTA  
T0L 2B0

TELEPHONE: 1-403-485-2241  
TOLL FREE: 1-877-485-2299  
FAX: 1-403-485-2920  
[www.vulcancounty.ab.ca](http://www.vulcancounty.ab.ca)

June 26, 2025

**Our File: DP 43-2025**

**Notification of Approved Development**

Vulcan County has approved the following development permit application:

Legal Land Location: NE 21-20-23 W4  
Type of Development: Ready-to-Move Dwelling  
Land Use District: Rural General  
**Applicant: Nate Gardner**

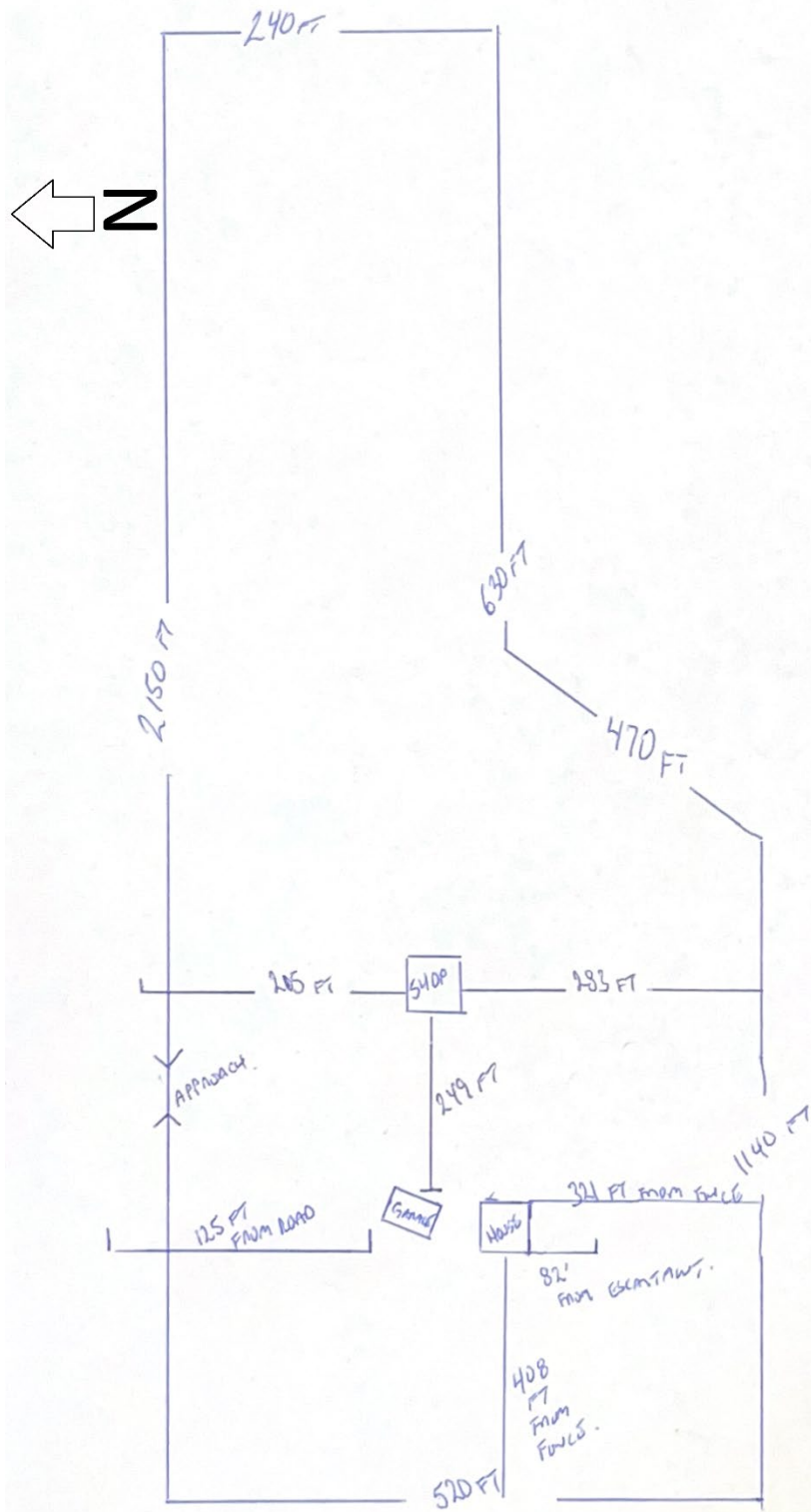
If you have any questions or concerns regarding this development, please contact the undersigned via regular mail, fax, email [devassist@vulcancounty.ab.ca](mailto:devassist@vulcancounty.ab.ca), or call 403-485-3135.

As per *Alberta Municipal Government Act [Section 685]* you are eligible to appeal the decision of the Development Authority. Vulcan County has determined that appeal jurisdiction remains at the local level for this Development Permit. The appeal can therefore be made in writing to the Secretary of the Chinook Intermunicipal Subdivision and Development Appeal Board and must contain the reasons for your appeal. The written appeal, along with the \$600 appeal fee can be mailed to the address at the top of the page or dropped off at the County Office at 102 Centre Street in Vulcan. The appeal period ends on **July 17, 2025**, any appeal must be received by Vulcan County before this deadline.

Kindest regards,

A handwritten signature in blue ink that reads 'Alena Matlock'.

Alena Matlock  
Development Officer  
Vulcan County



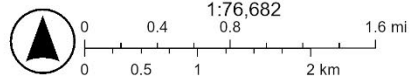
# Ortho



6/25/2025, 2:54:13 PM

- Residences
- Siksika Nation
- Points of Interest
- Cemetery
- School
- Road Network
- County Gravel Road
- County Gravel Road
- County Gravel Road
- County Paved Road
- Provincial Secondary Highway
- Railway
- <all other values>
- County Boundary
- Landowners (June 1, 2025)
- Town & Villages Corporate Boundaries
- VC Aerial - July 2024
- Red: Band\_1

- Green: Band\_2
- Blue: Band\_3
- World Imagery
- Low Resolution 15m Imagery
- High Resolution 60cm Imagery
- High Resolution 30cm Imagery
- Citations



Earthstar Geographics