



P.O. BOX 180
VULCAN, ALBERTA
T0L 2B0

TELEPHONE: 1-403-485-2241
TOLL FREE: 1-877-485-2299
FAX: 1-403-485-2920
www.vulcancounty.ab.ca

December 16, 2024

Our File: DP 01-2025

Notification of Proposed Development

Vulcan County has received a development permit application:

Legal Land Location: NW 30-16-20 W4
Type of Development: Multi-Unit Dwelling
Land Use District: (RG) – Rural General
Applicant: Armada Farming

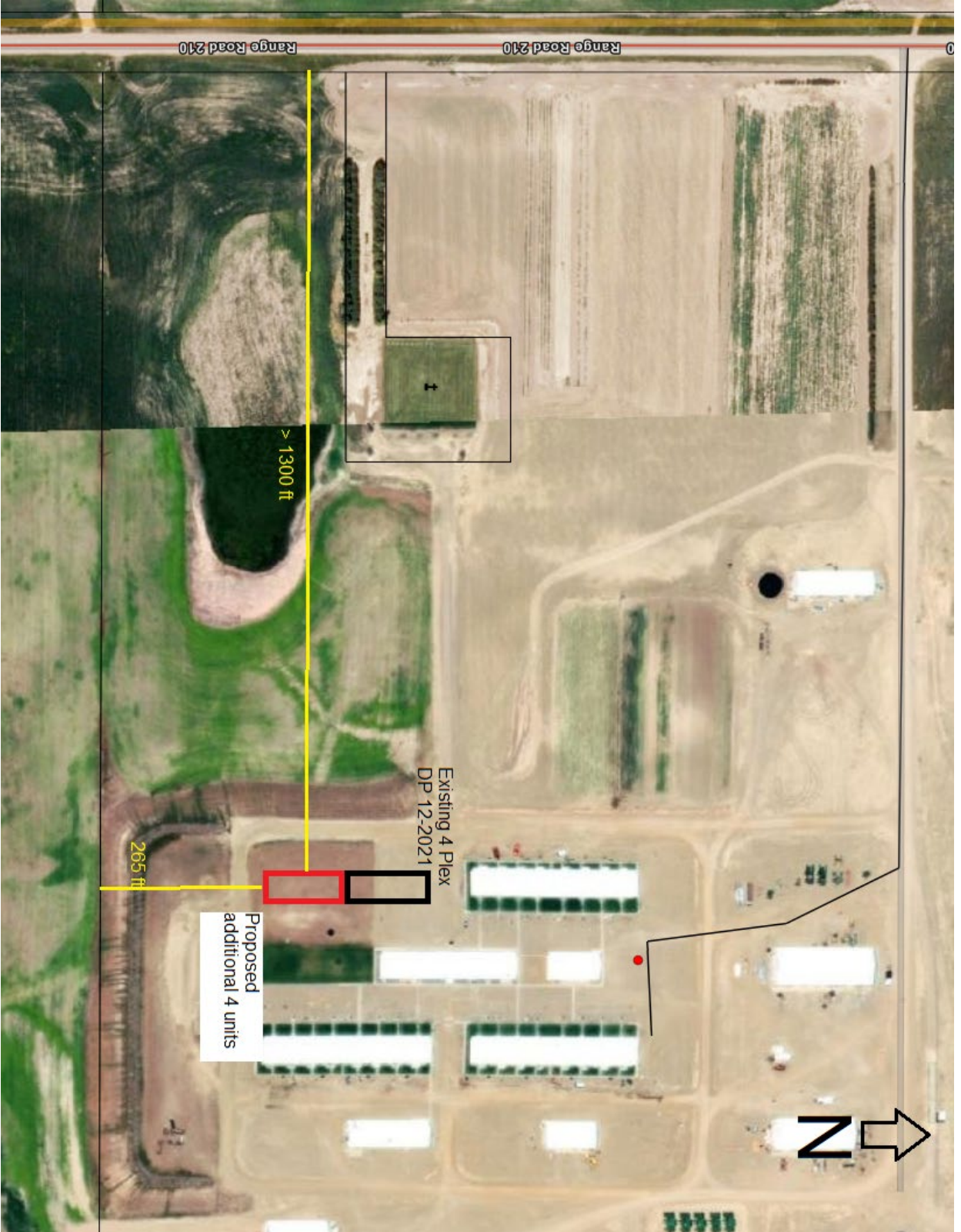
The Municipal Planning Commission will be meeting to consider this application on **January 15, 2025** at 9:00 a.m. in the Vulcan County Administration Building, 102 Centre Street Vulcan, Alberta.

If you have any concerns or comments regarding this development or if you require more information, please contact the Vulcan County office, quoting the above file number by **4:00 pm on January 13, 2025**, to the Development Department via regular mail, fax, email devassist@vulcancounty.ab.ca, or call 403-485-3135.

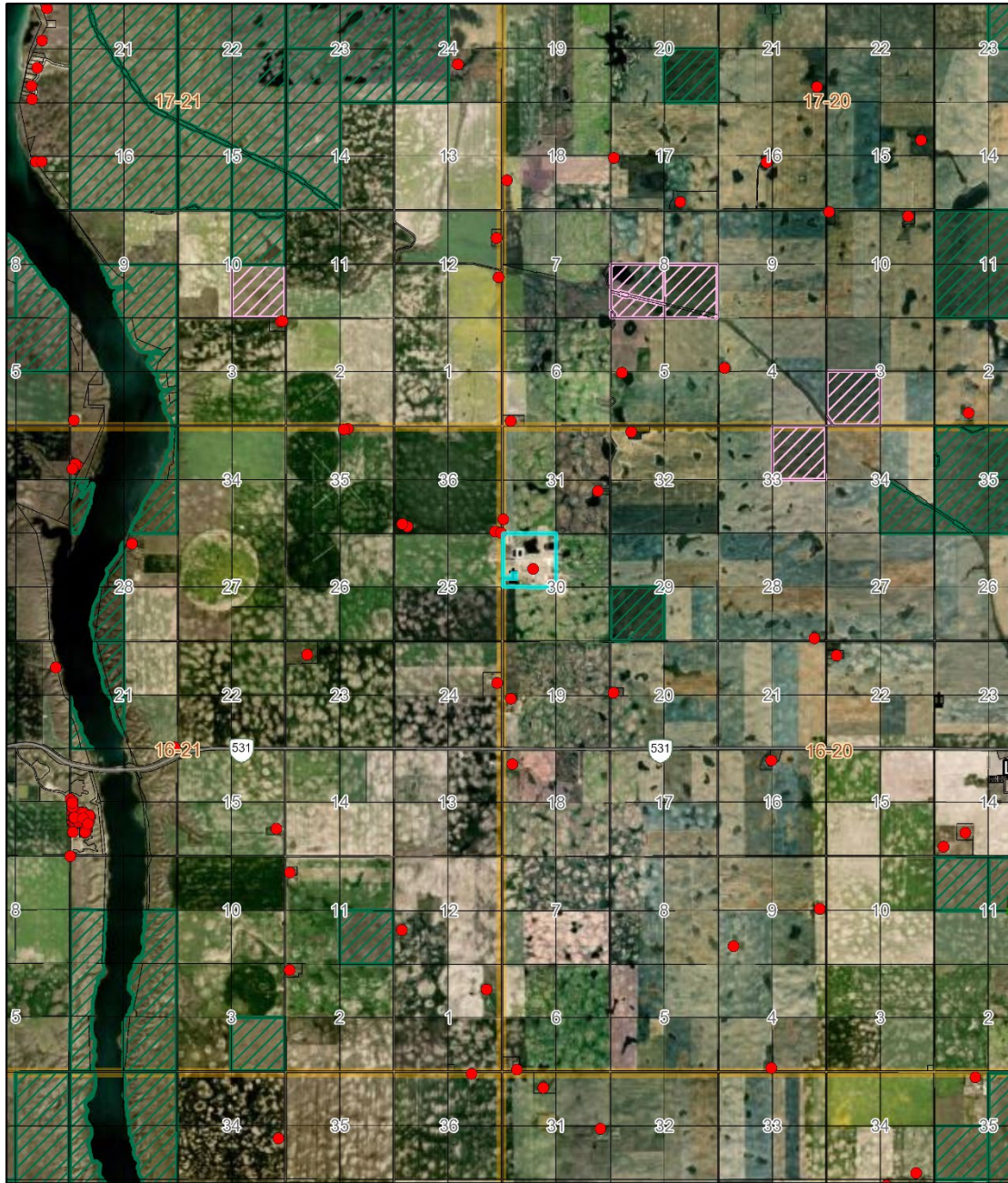
Kindest Regards,

A handwritten signature in blue ink that reads "Alena Matlock".

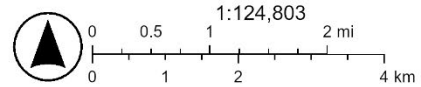
Alena Matlock
Development Officer
Vulcan County



Ortho



12/12/2024, 8:51:11 AM



- Residences
- School
- Landowners (December 1, 2024)
- Cemetery
- Provincial Grazing Leases (December 2022)
- Cemetery
- Vulcan County Grazing Leases (December 2022)
- Waste Transfer Station
- Town & Villages Corporate Boundaries

Esri Canada, Esri, TomTom, Garmin, SafeGraph, GeoTechnologies, Inc, METI/NASA, USGS, EPA, USDA, NRCAN, Parks Canada, Earthstar Geographics

