



P.O. BOX 180
VULCAN, ALBERTA
T0L 2B0

TELEPHONE: 1-403-485-2241
TOLL FREE: 1-877-485-2299
FAX: 1-403-485-2920
www.vulcancounty.ab.ca

September 19, 2024

Our File: DP 90-2024

Notification of Proposed Development

Vulcan County has received a development permit application:

Legal Land Location: NE 28-16-21 W4
Type of Development: Renewable Energy; Individual
Land Use District: (RG) – Rural General
Applicant: **D-Com Energy Solutions**

The Municipal Planning Commission will be meeting to consider this application on **October 2, 2024** at 9:00 a.m. in the Vulcan County Administration Building, 102 Centre Street Vulcan, Alberta.

If you have any concerns or comments regarding this development or if you require more information, please contact the Vulcan County office, quoting the above file number by **4:00 pm on September 30, 2024**, to the Development Department via regular mail, fax, email devassist@vulcancounty.ab.ca, or call 403-485-3135.

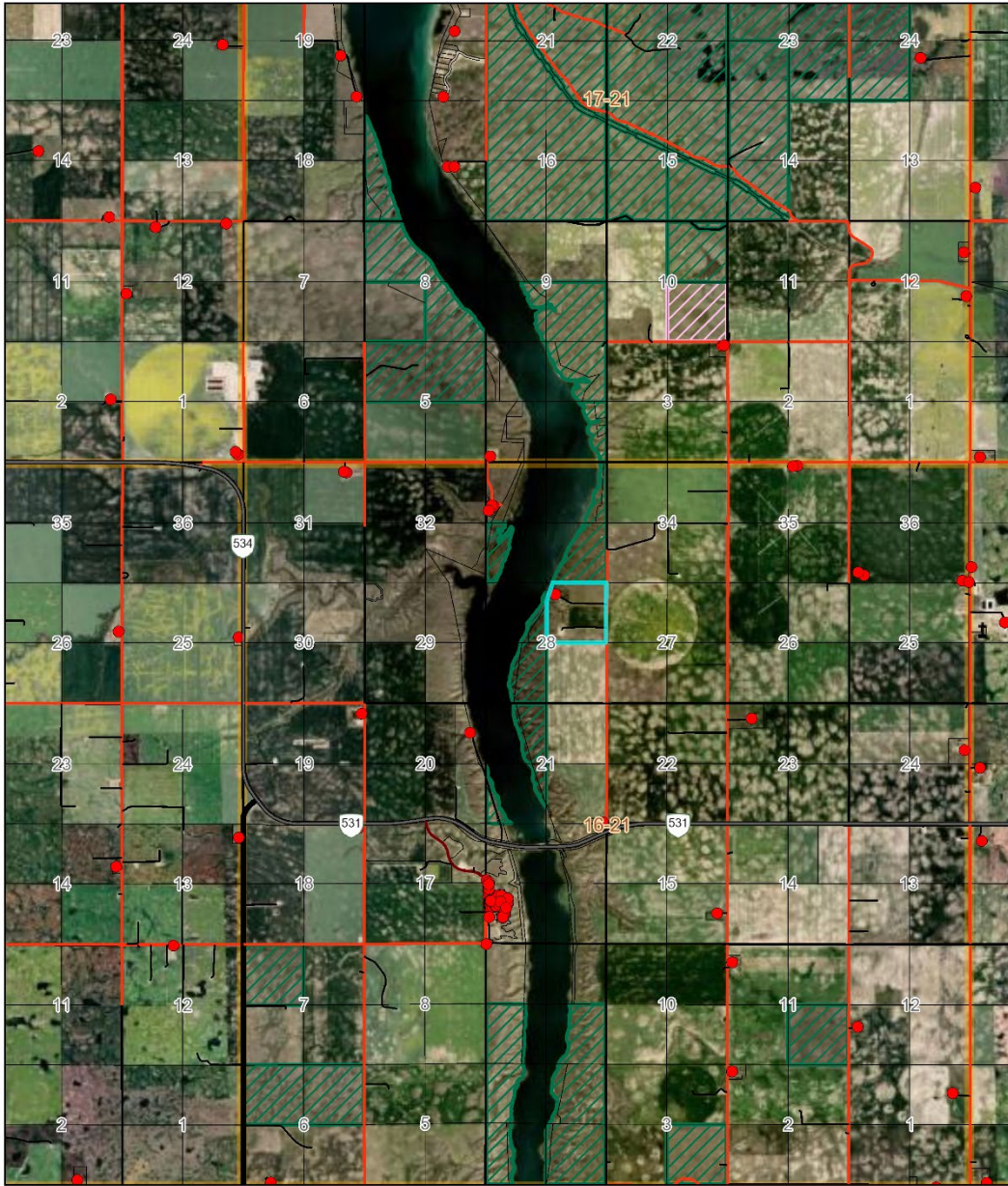
Kindest Regards,

A handwritten signature in blue ink that reads "Alena Matlock".

Alena Matlock
Development Officer
Vulcan County

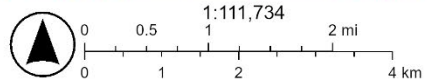


Ortho



9/19/2024, 11:20:45 AM

- Residences
- ⚡ Points of Interest
- ⚡ Cemetery
- Road_Network
- County Gravel Road
- County Gravel Road
- Private Road
- Provincial Gravel Highway
- Provincial Secondary Highway
- Landowners (August 16, 2024)
- ▨ Provincial Grazing Leases (December 2022)
- ▨ Vulcan County Grazing Leases (December 2022)



Esri Canada, Esri, TomTom, Garmin, SafeGraph, GeoTechnologies, Inc., METI/NASA, USGS, EPA, USDA, NRCan, Parks Canada, Earthstar Geographics