

Vulcan LAND OWNERSHIP MAP

Alberta, Canada, 2025

LEGEND

Points of Interest

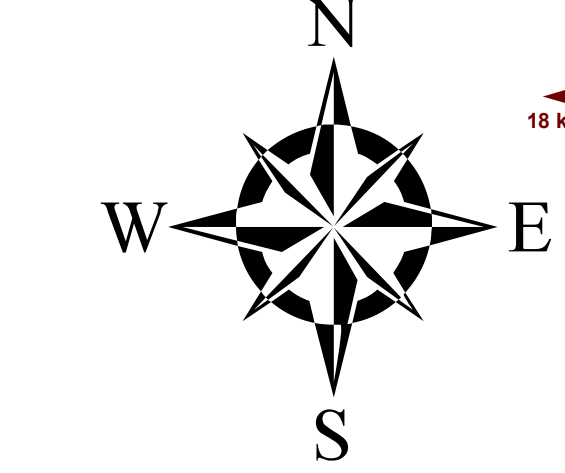
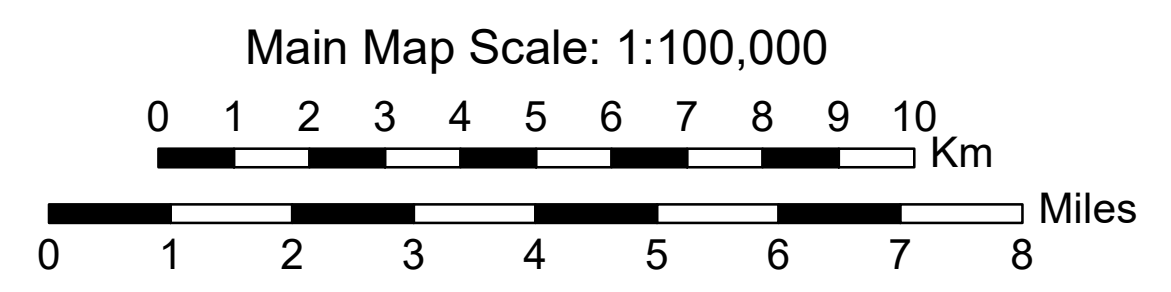
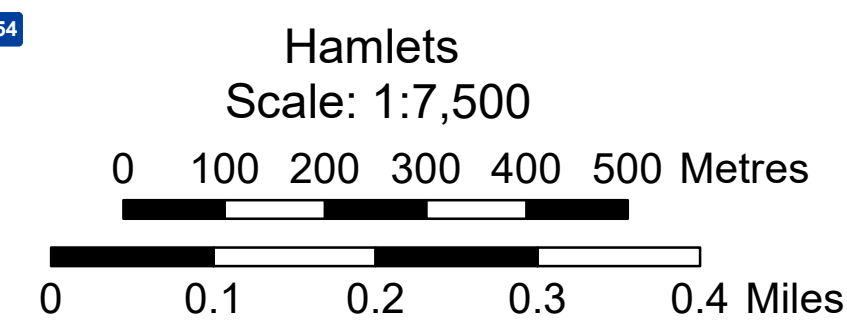
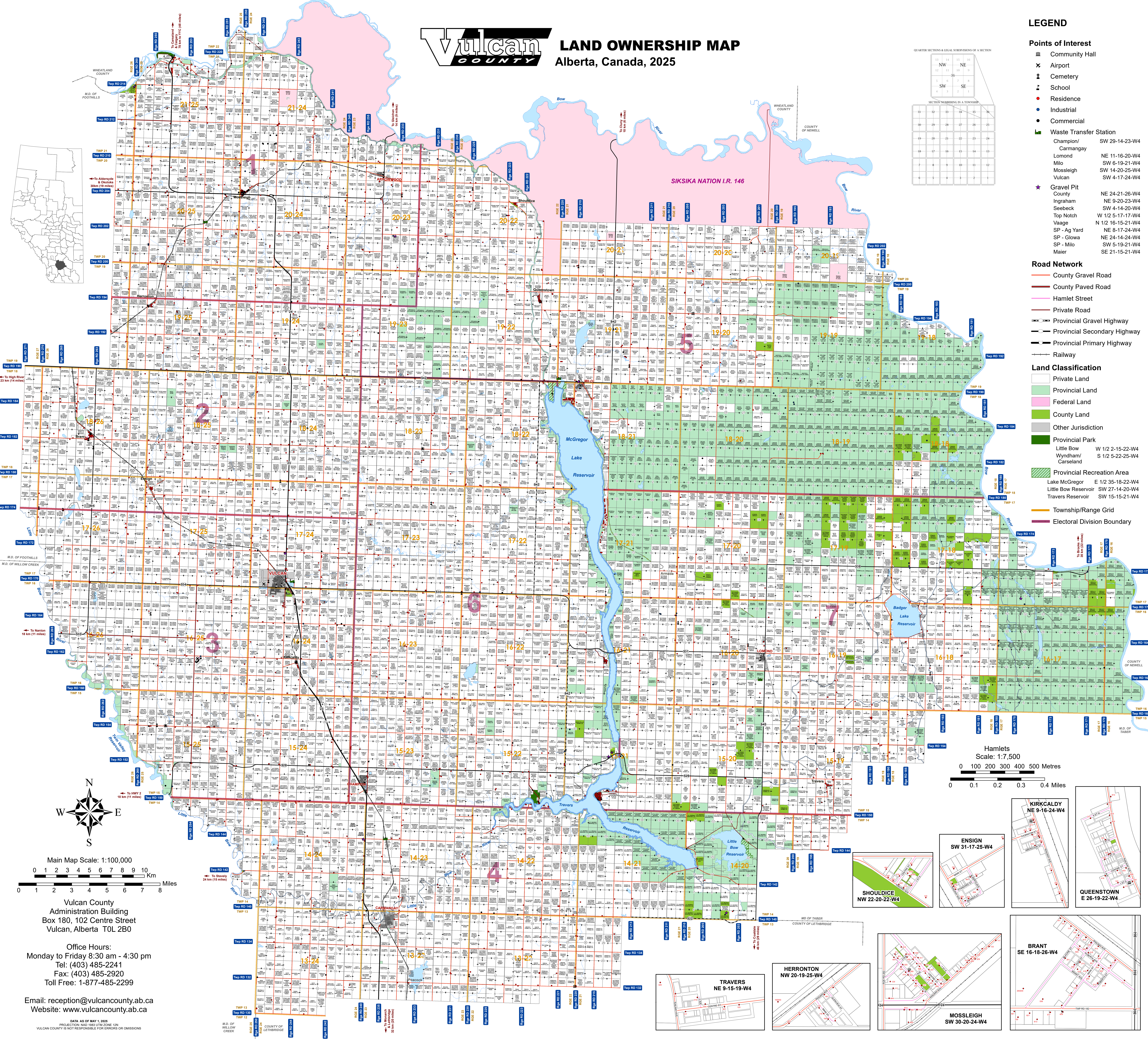
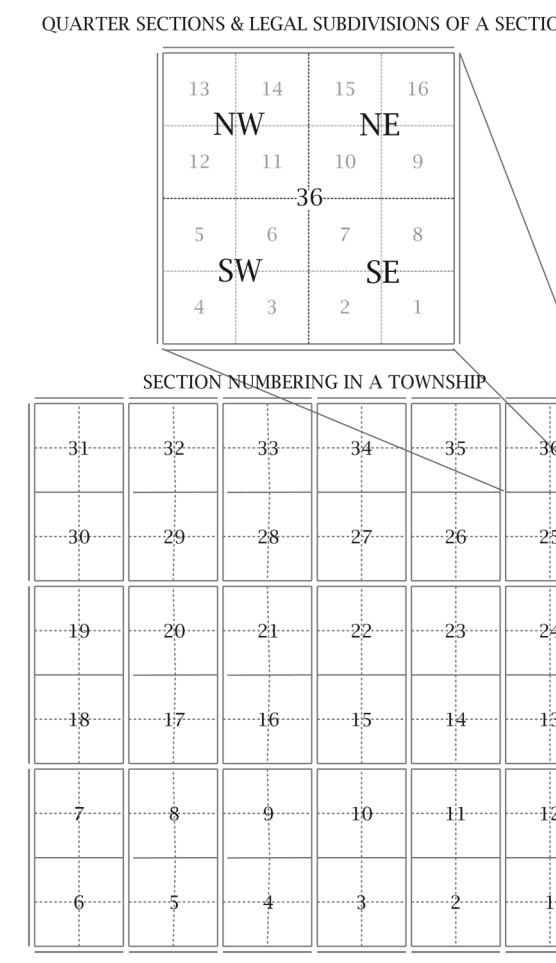
- Community Hall
- Airport
- Cemetery
- School
- Residence
- Industrial
- Commercial
- Waste Transfer Station
 - Champion/ Carmangay SW 29-14-23-W4
 - Lomond NE 11-16-20-W4
 - Milo SW 6-19-21-W4
 - Mossleigh SW 14-20-25-W4
 - Vulcan SW 4-17-24-W4
- Gravel Pit
 - County NE 24-21-26-W4
 - Ingraham NE 9-20-23-W4
 - Seebeck SW 4-14-20-W4
 - Top Notch W 1/2 5-17-17-W4
 - Vaage N 1/2 16-15-21-W4
 - SP - Ag Yard NE 8-17-24-W4
 - SP - Glowa NE 24-14-24-W4
 - SP - Milo SW 5-19-21-W4
 - Maier SE 21-15-21-W4

Road Network

- County Gravel Road
- County Paved Road
- Hamlet Street
- Private Road
- Provincial Gravel Highway
- Provincial Secondary Highway
- Provincial Primary Highway
- Railway

Land Classification

- Private Land
- Provincial Land
- Federal Land
- County Land
- Other Jurisdiction
- Provincial Park
 - Little Bow W 1/2 2-15-22-W4
 - Wyngham/ Carseland S 1/2 5-22-25-W4
- Provincial Recreation Area
 - Lake McGregor E 1/2 35-18-22-W4
 - Little Bow Reservoir SW 27-14-20-W4
 - Travers Reservoir SW 15-15-21-W4
- Township/Range Grid
- Electoral Division Boundary



Vulcan County
Administration Building
Box 180, 102 Centre Street
Vulcan, Alberta T0L 2B0

Office Hours:
Monday to Friday 8:30 am - 4:30 pm
Tel: (403) 485-2241
Fax: (403) 485-2920
Toll Free: 1-877-485-2299

Email: reception@vulcancounty.ab.ca
Website: www.vulcancounty.ab.ca

DATA AS OF MAY 1, 2025
PROJECTION: NAD 1983 UTM ZONE 12N
VULCAN COUNTY IS NOT RESPONSIBLE FOR ERRORS OR OMISSIONS

