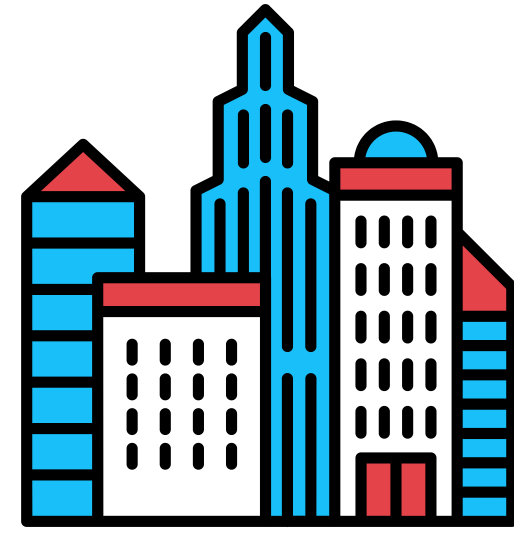


# Vulcan County Tax Rates and Information

## Facts you need to know for 2025!



### Large City Comparisons

(close to Vulcan County)

Vulcan County's Residential Municipal Tax Rates have historically been lower than the **City of Lethbridge** (7.9541 mills - 2025), and are now even a lower municipal tax rate than the **City of Calgary** (3.8706 mills- 2025).



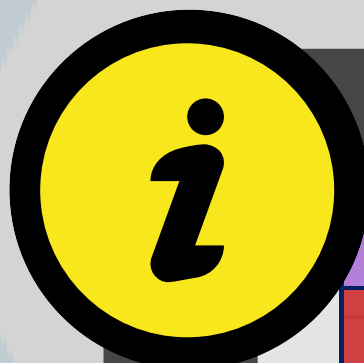
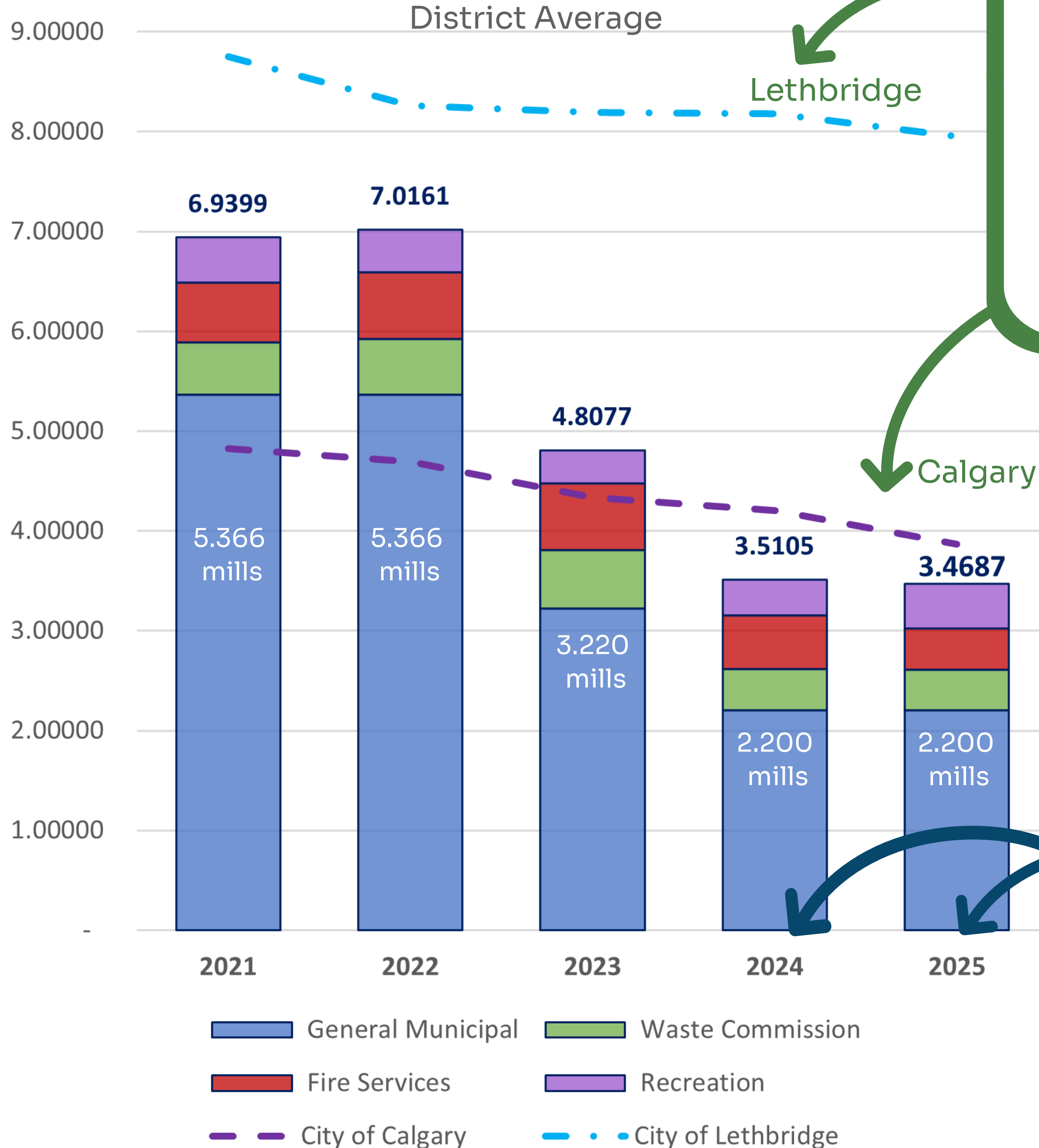
### Residential Tax Rates

Through Strategic Planning and assessment growth, over the past couple years, the County was able to **significantly reduce the General Municipal Tax Rates for Residential Properties**. These highly competitive rates are as low as currently possible and we have **maintained these rates for 2025 tax year**.

### Municipal Tax Rates

#### Residential

District Average



### Municipal Taxes:

Vulcan County establishes a "General Municipal" tax rate for County Operations; whereas, for transparency purposes, the County also establishes separate tax rates for the Waste Commission, Fire Protection Services, and Recreational Services.

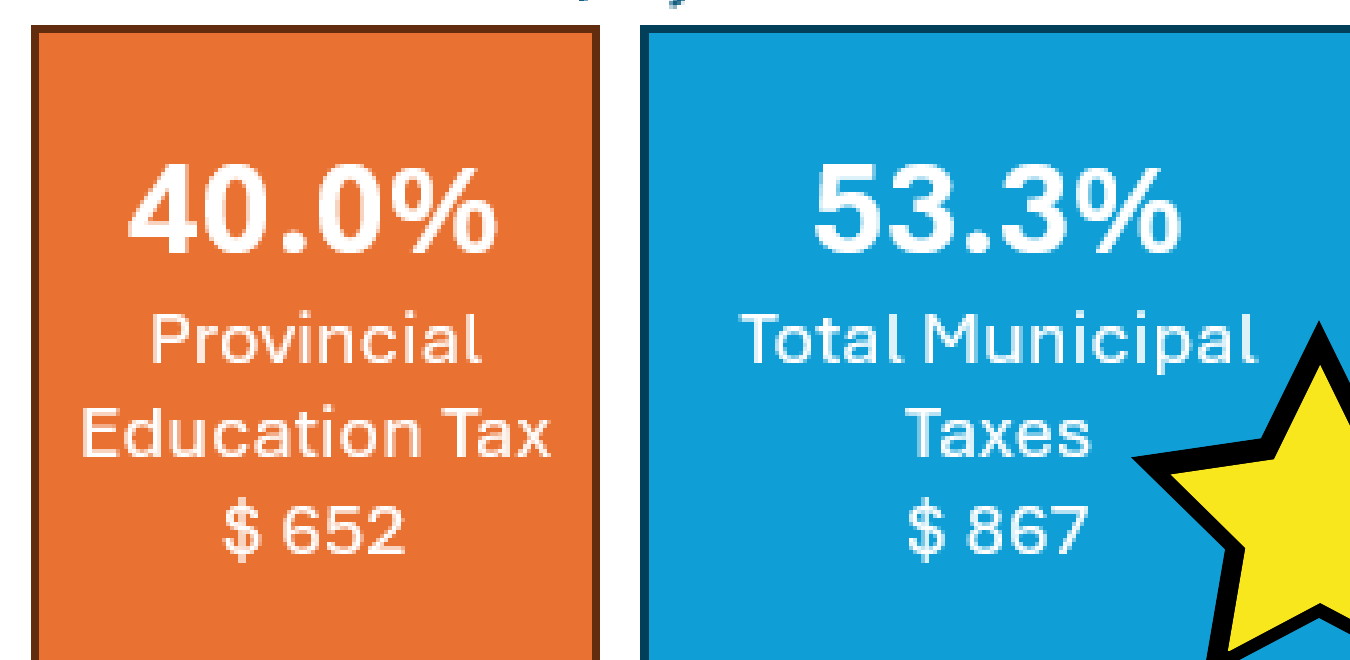
For more information on Budget and Tax, please see the County's website:  
[www.vulcancounty.ab.ca](http://www.vulcancounty.ab.ca) > Departments > Corporate Services

\* Above chart only includes municipal tax rates (excludes requisitions)



### Total Property Tax

\$1,626



The above is an example of a \$250,000 residential property. The **municipal taxes only represent 53.3%** of the total tax bill. The remaining are requisitions that the County has no control over.



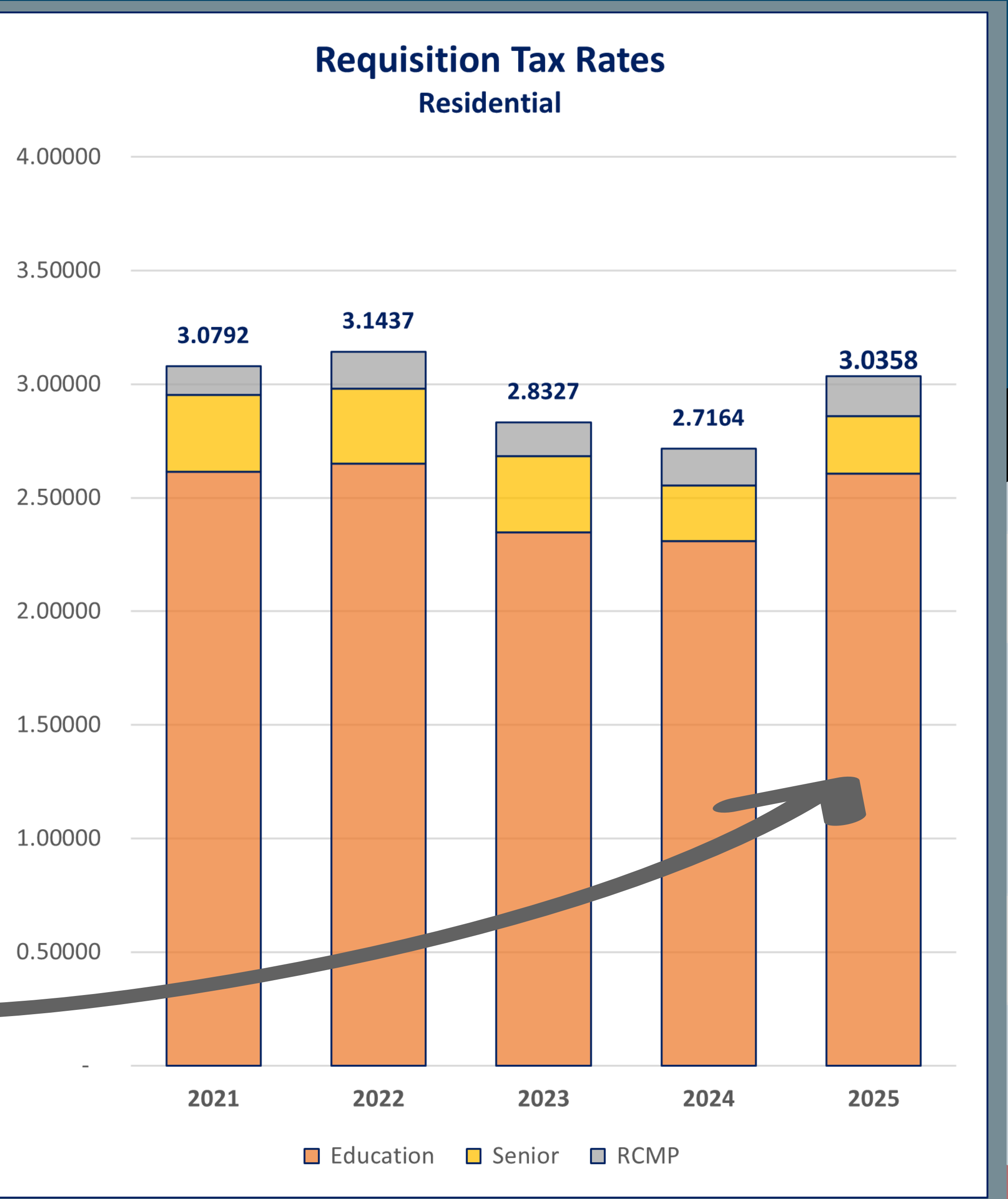
## Requisition Tax Rates (Residential)

The **municipal taxes only represent 53.3%** of the total tax bill. The remaining are **requisitions that the County has no control over**. These requisitions include:

- > Provincial Education Tax Rate
- > Senior Foundation Tax Rate
- > RCMP Requisition Tax Rate \*

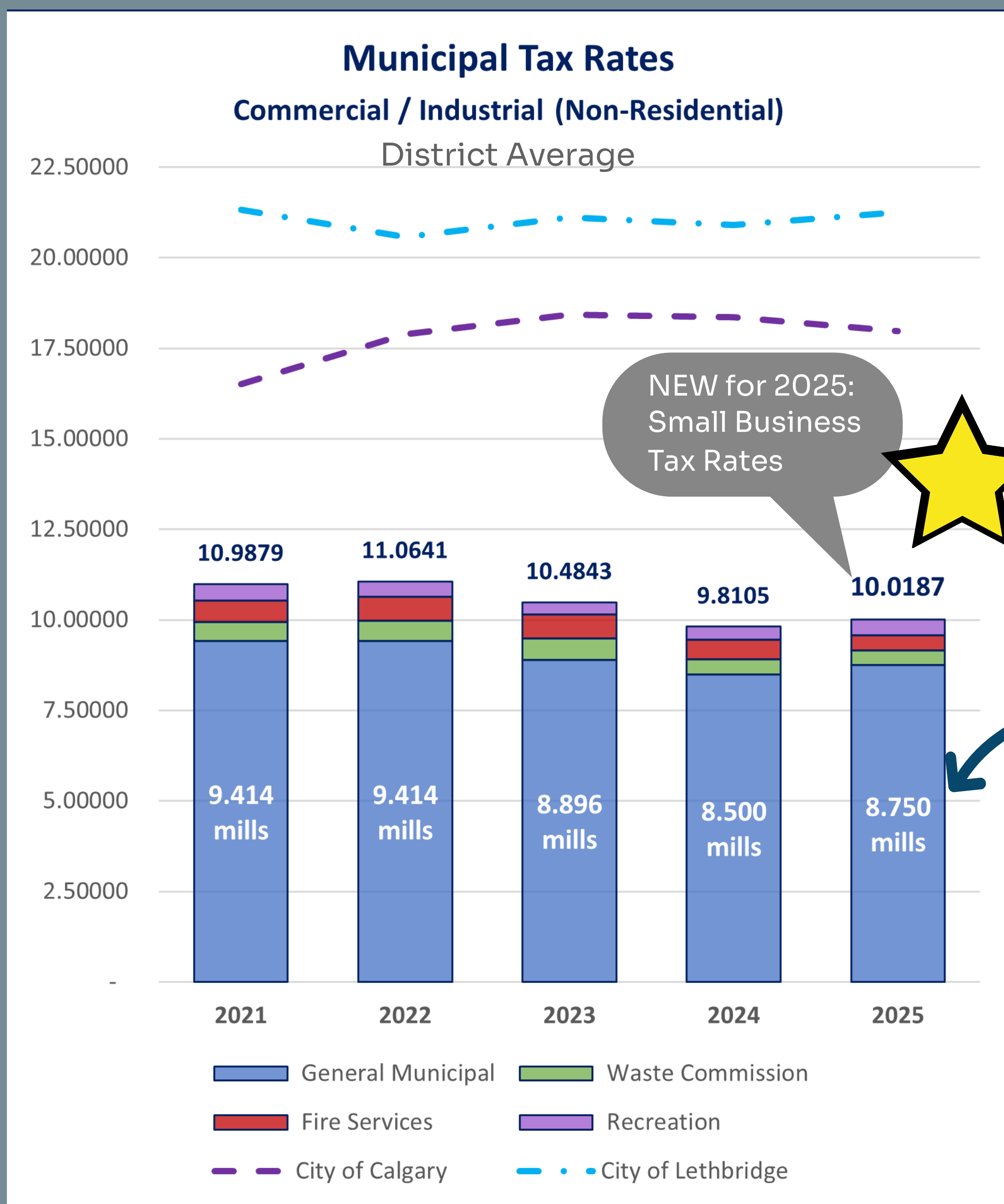
All of the taxes collected for Education and RCMP are paid to the Province of Alberta and the taxes collected for Seniors are paid to the Marquis Foundation.

There is an **increase in Education Tax Rates in 2025** as the Provincial Rate was "frozen" for the last couple years; however, this brings the tax rates back to similar historical levels for the County.



\* RCMP are separated for transparency purposes (even though not defined as a requisition by the MGA - County still has no control over annual costing).

## Non-Residential Information



## Non-Residential Tax Rates

Through Strategic Planning and assessment growth there were **also reductions in Non-Residential tax rates in 2023/2024**. For the 2025 tax year, there was also some updates in methodology, including:

- > Creation of a **NEW** assessment sub-class for "**Small Business Property**" which is able to have reduced rates (General Municipal Tax Rate of 7.500 mill for 2025).
- > Removal of special tax levies of fire and recreation on Linear Properties. **Only partial 2.94% increase in 2025 General Municipal Tax Rate** (other than small business rates).

